

KP SERIES

SCREW JACKS

**IN STOCK PRE-ASSEMBLED KIT
FOR "ON DEMAND" LIFTING SYSTEMS**

HIGH LOAD CAPACITY READY AT YOUR DISPOSAL

To be more and more a reliable partner for customers, MecVel has developed a series of pre-assembled kits for lifting systems up to 50 kN (5 tons) with an excellent delivery time.

Since 1987 MecVel designs and manufactures linear actuators and screw jacks, devices using electric motors, gearboxes and push tubes to handle loads even more than 200 kN (20 tons).

With a customization service able to configure each product to tailor it according to application technical specifications, MecVel purpose is to always provide the most suitable and performing linear motion solution.

Moreover, according to market requests for a constant reduction of costs and delivery time, the company has developed the KP series, created starting from HT and HR screw jacks.

This new series is dedicated to the easiest lifting systems, both vertical and horizontal, where to perform the movement is just required a hand wheel for the manual driving or an electric motor, components that can be usually found in the market, as well as belts and pulleys needed to complete the connection, while MecVel provides the "heart" of the motion.

The company, in fact, offers four different sizes of gearboxes already mounted and grease lubricated, up to 5 kN (500 kg), from 5 to 10 kN (1 ton), from 10 to 25 kN (2,5 tons) and from 25 to 50 kN (5 tons), with two gear ratios ready for delivery: 1:10 and 1:30.

KP series is subdivided in two kits:

- The one that takes shape from HT models, where the acme screw runs through the gearbox - KT version
- The one that takes shape from HR models, where the acme screw rotates integrally with the gearbox. In this case the linear motion is performed by a nut travelling along the acme screw (nut included in the kit provided by the company) - KR version

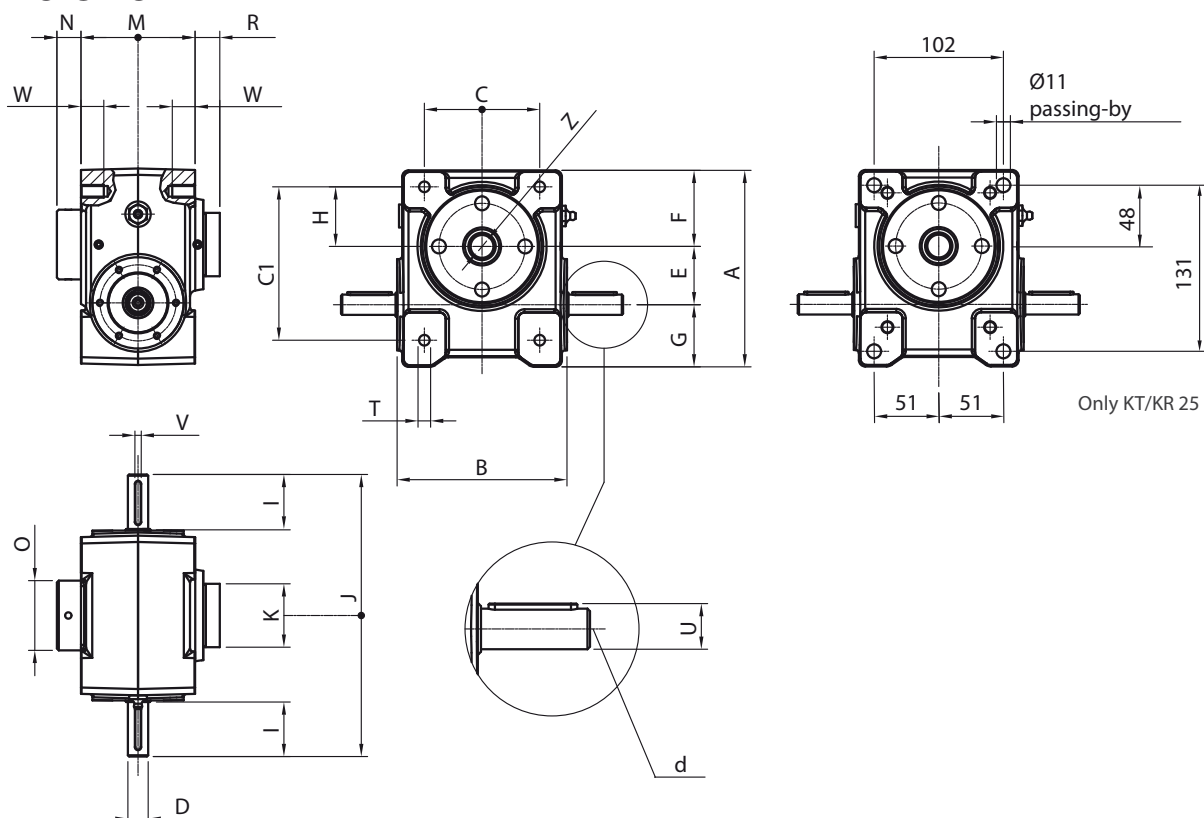
According to the kit, MecVel supplies the acme screw:

- With KT, it is supplied in one meter steps, which the customer can cut depending on the stroke length needed
- With KR, it is supplied with a working stroke of 500 mm, and the rear end modified for the correct join with the gearbox. The front end is "at customer disposal", to adjust the acme screw length according to application requests

Coupling and guide bushing are already fitted in HT version gearboxes, while for those in HR version coupling and closing cap are supplied separately together with nut and mounting instructions.

Never allow the product to reach the mechanical stop in order to avoid damages of internal components.

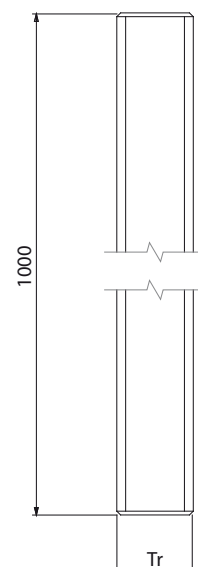
DIMENSIONS



	A	B	C	C1	D	E	F	G	H	I	J	K	M	N	O	R	T	U	V	W	d	Z	
																						KT	KR
KT/KR 05	96	79	52	60	10	25	36	35	21	26	132	36	70	11	35	20	M8	11,2	3	15	M3	Tr 18x4	Ø 12
KT/KR 10	105	104	62	78	14	32	40	33	29	28	162	36	80	15	40	17	M8	16	5	16	M5	Tr 20x4	Ø 14
KT/KR 25	155	134	81	106	16	46	60	49	42	43	222	50	90	19	55	19	M10	18	5	18	M5	Tr 30x6	Ø 20
KT/KR 50	198	166	115	150	19	62	78	58	63	46	262	70	120	29	70	29	M14	21,5	6	25	M6	Tr 40x7	Ø 28

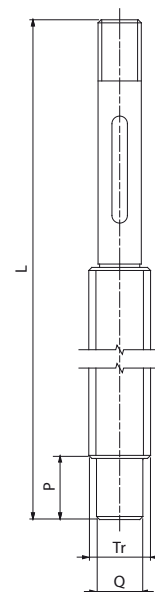
FEATURES OF SCREW SUPPLIED WITH KT

Model	Fmax	Max. working stroke for 1 meter screw (mm)	Tr	Accuracy class
KT05	5 kN	875	18x4	0,20 mm over 300 mm
KT10	10 kN	865	20x4	0,20 mm over 300 mm
KT25	25 kN	830	30x6	0,30 mm over 300 mm
KT50	50 kN	775	40x7	0,20 mm over 300 mm



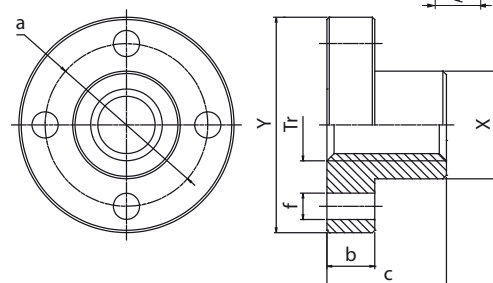
FEATURES OF SCREW SUPPLIED WITH KR

Model	Fmax	Screw lenght for 500 mm working stroke (L)	Tr	P	Q
KR05	5 kN	663	18x4	16	Ø 12
KR10	10 kN	690	20x4	20	Ø 15
KR25	25 kN	736	30x6	25	Ø 20
KR50	50 kN	815	40x7	30	Ø 25



FEATURES OF NUT SUPPLIED WITH KR

Model	X	Y	f	a	b	c
KR05	Ø 30	55	7	Ø 43	12	35
KR10	Ø 35	65	9	Ø 50	15	40
KR25	Ø 45	90	11	Ø 68	20	50
KR50	Ø 57	99	11	Ø 78	25	70



ORDERING KEY

KT25 / 1000 / 1:30 / 01

MODEL: _____

KT05 KT10 KT25 KT50
KR05 KR10 KR25 KR50

SCREW LENGTH (mm): _____

with KT in 1 meter step, es. 1000 mm = 1000 (this value indicates the screw length and not the working stroke. To calculate correctly the screw length according to the working stroke, refer to the table in the previous page)

with KR 500 mm = 0500

REDUCTION RATIO: _____

1:10

1:30

2' INPUTSHAFT: _____

01

MecVel reserves the right to modify without notice any information and/or feature related to its products.
Data contained in this document are indicative and not binding for the company.