

- Three phase or single phase motor CE
- Cross gears (ALI5-P)
- Belt drive (ALI5-PB)
- Acme lead screw or ballscrew (VRS)
- Chrome plated steel push road
- Grease (standard) or oil (VRS continuous duty S1) lubricated
- IP55, tested according to rule CEI EN 60529
NB: Only for brake motors Standard IP54, IP65 on request
- Working temperature range -10°C +60°C
- Intermittent duty S3 30% (5min) a +30°C acme lead screw version, only for AC versions
- Limit switch, potentiometer, encoder on request
- At-Ex II 3 D T4 version (A.C.motor) on request

ALI5-P (Vac 3-phase Acme lead screw)				
Fmax (N)	Speed (mm/s)	Version	Motor size	Motor power (KW)
2700 *	113	M11	IEC71	0.75 2 poles
4000 *	57	M12	IEC71	0.55 4 poles
6600	28	M13	IEC71	0.55 4 poles
15000	14	M14	IEC71	0.55 4 poles
15000	9	M15	IEC71	0.37 4 poles
15000	5	M16	IEC71	0.25 4 poles

ALI 5-P VRS (Vac 3-phase ballscrew)				
Fmax (N)	Speed (mm/s)	Version	Motor size	Motor power (KW)
3600 *	233	M61	IEC80	1.1 2 poles
3800 *	194	M62	IEC80	1.1 2 poles
4300 *	117	M63	IEC80	0.75 4 poles
4500 *	97	M64	IEC80	0.55 4 poles
4500 *	49	M65	IEC71	0.25 4 poles

* When speed is more than 30 mm/s and/or strokes longer than 350mm, check STROKE SETUP section.

With single-phase motors type M (see motor choice guideline in paragraph ACCESSORIES) performances are 20% lower than the three-phase motor.

→ The brakemotor is strongly recommended

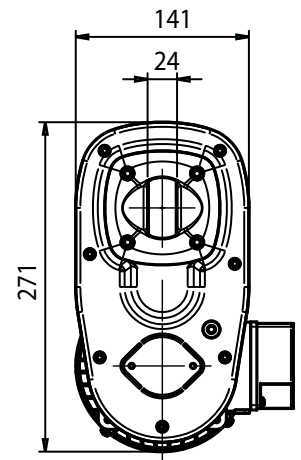
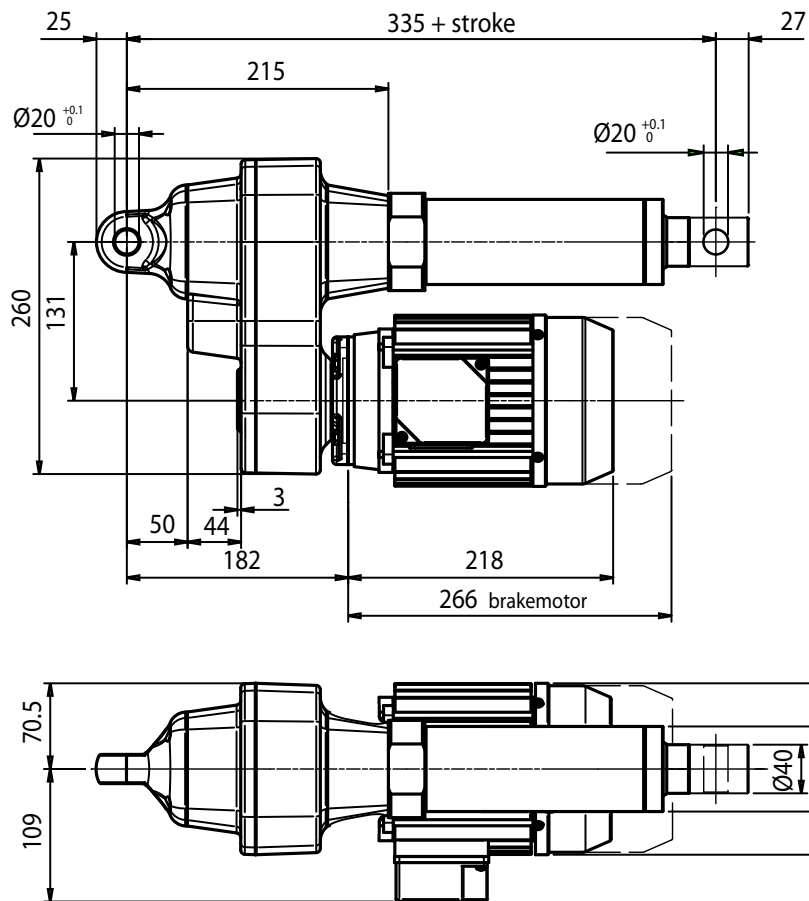
BEFORE OPERATING ACTUATOR MAKE SURE YOU READ AND UNDERSTOOD BASIC OPERATIONAL INSTRUCTIONS SHOWN ON USERMANUALS, AVAILABLE FROM WEBSITE.

THIS DOCUMENT DISPLAYS MOST TYPICAL STANDARD FEATURES AND SETUPS: CONTACT OUR OFFICES FOR MORE.
ACTUATOR SHALL NOT COME TO MECHANICAL STROKE-END, TO AVOID FAILURES.
CONSIDER MECVEL's LIMITSWITCHES (MODEL ALI5-F or ALI5-FCM) OR PUT THEM ON MACHINE/FRAME.



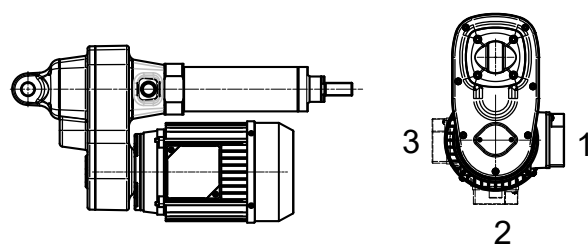
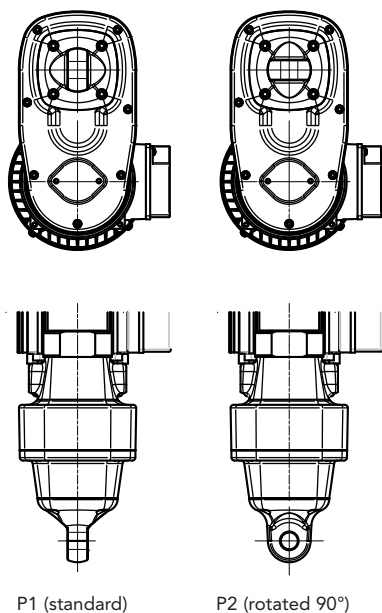
MecVel reserves the right to change products information and/or features without notice; all data contained in this catalogue are purely indicative and not binding for the company.

VERSION WITHOUT LIMITSWITCHES



REAR END

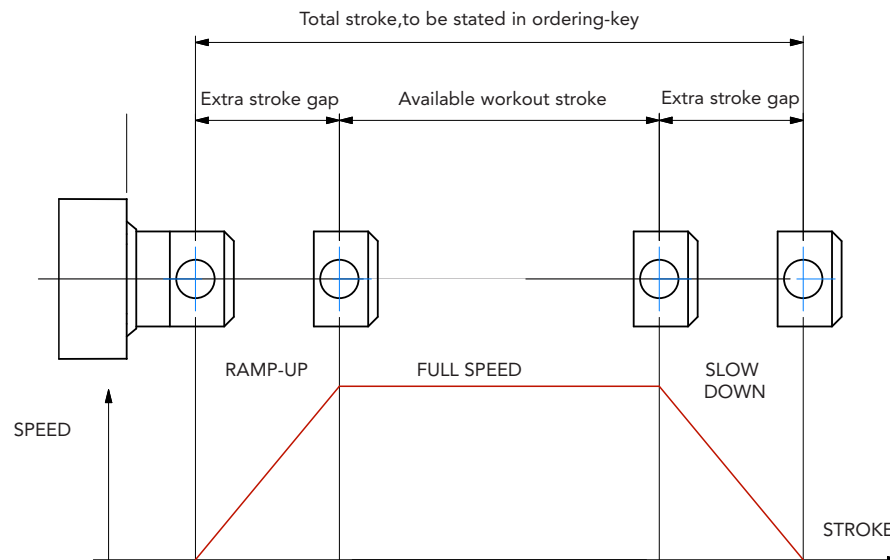
E-BOX POSITION



STROKE SETUP

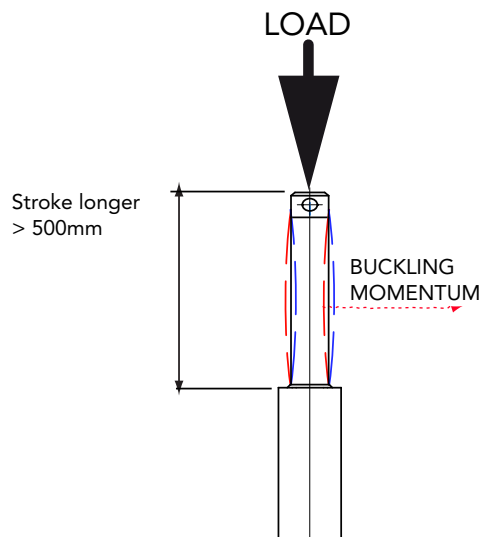
Useful tips for handling stroke and avoid run-on-block collision.

- When stroke is more than 350 mm, add 50 mm extra-stroke as guidance, and put corresponding value in ordering-key.
- **WARNING SPEED-TIMING ALONG STROKELENGTH:** ramps are extremely important when speed is >30 mm/s!!! Inverter or PWM drive recommended!
- The more speed raises the more extra stroke has to raise too.



BUCKLING

When stroke is longer than 500mm, BUCKLING can be a risk: please check mounting with our offices and/or see usermanuals.

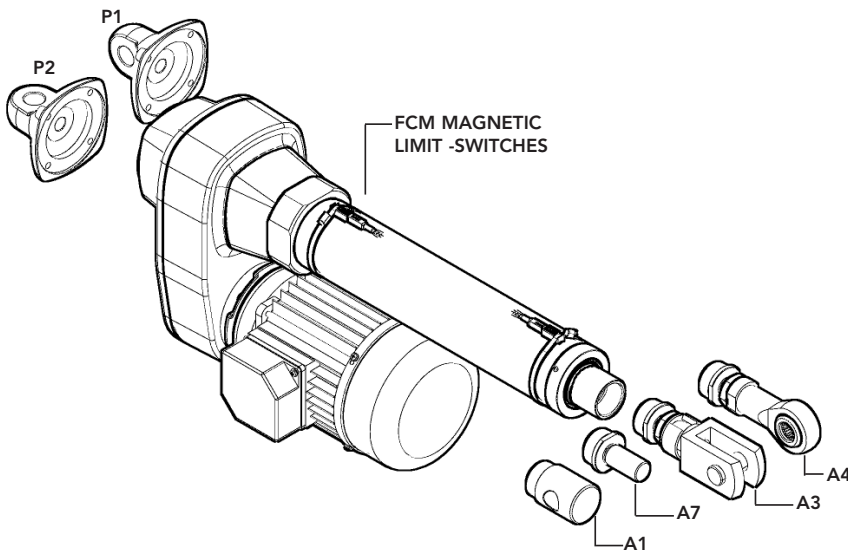


IMPORTANT:

Long strokes, even if load is low, can generate significant buckling momentums, as sketch slows. This happens when actuator is in its all-opened position: that's the reason why we recommend 100 mm extra-stroke. Pushtube will have this 100 mm-portion always inside the overtube, improving guidance against buckling.

For more information on this, contact our office.

ALI5-P/0250/M16/CA-400/50-T-71-4-0,25/AB/1/E06/2FCM0/POT01A/P1/A1/			
MODEL	ALI5-P / ALI5-PB VRS / ALI5-P FCM / ALI5-P FCI		
STROKE	es. 250 mm = 0250		
VERSION	M11 / M12 / M13 / M14 / M15 / M16 (ALI5-P) M61 / M62 / M63 / M64 / M65 (ALI5-PB) M00 = Not standard speed Flanged version = advice reduction ratio and screw pitch		
MOTOR	A.C. version, voltage, type, size, nr. of poles, power With motorflange only put 0 With special motorflange put: PD		
AC MOTOR OPTIONS	Motorflange: for motorflange version only advise size - i.e. for IEC71 B14 put 71B14 Protection Degree: IP65, for selfbrake motor IP54 standard Brake type: for brakemotors only (es. FECA) Options: Advise if needed (es.. AB 2'shaft)		
E-BOX POSITION	1		
ENCODER	Options pg.76 None: Leave blank		
LIMIT-SWITCHES	None: Leave blank		
POTENTIOMETER	POT01A (1Kohm) POT10A (10Kohm) None: Leave blank		
REAR END	P1 = Eyelet (standard) P2 = Eyelet (90°)		
FRONT END	A1 = Eyelet (standard) A3 = Yoke + Clip A4 = Rod end A7 = M20x1,5 male		
NOTE: COMPLETE THE ORDERING KEY ADDING THE OPTIONS YOU CAN FIND IN THE "ACCESSORIES AND OPTIONS" SECTION			



Note: "B" dimension variations depending on model

ALI5-P = See pictures
 ALI5-P stroke > 500 = + 20 mm
 ALI5-P-FCM stroke < 500 = + 40 mm
 ALI5-P-FCM stroke > 500 = + 60 mm
 ALI5-P-FCI stroke < 500 = + 30 mm
 ALI5-P-FCI stroke > 500 = + 50 mm
 ALI5-P with safety nut "G" = + 50 mm
 ALI5-P with antirotation device "L" = + 15 mm
 ALI5-P with bellows = + 25 (excluding FCM and FCI version)

