

- Permanent magnet DC motor 12-24 V
- Three phase and mono phase AC motor
- Worm gearbox
- Acme lead screw or ballscrew (VRS)
- Chrome plated steel push rod
- Permanent lubrication
- IP65 for DC versions
- IP55 for AC versions, tested according to rule CEI EN 60529. NB: Only for brake motors Standard IP54, IP65 on request
- Working temperature range -10°C +60°C
- Intermittent duty S3 30% (5 min) a +30°C
- Limit switches, potentiometer and encoder on request
- Version At-Ex II 3 D T4 (AC motor) on request

ALI4-P (Vac triphase)				
Fmax (N)	Speed (mm/s)	Version	Motor size	Motor power (KW)
11000	12	M01	IEC71	0.55 2 poles
15000	6	M02	IEC63	0.37 4 poles

ALI4-P (Vdc)						
Fmax (N)	Speed (mm/s)	Version	Motor size	Motor speed (rpm)	Max Current for F max(A) 24Vdc	Fs % base 5 min.
1700*	48	M03	77	3000	11	20
2600	29	M04	77	3000	12	20
4500	14	M05	77	3000	11	20
6800	8	M06	77	3000	12	20
10000	5	M07	77	3000	14	10

* When speed is more than 30 mm/s and/or strokes longer than 350mm, check STROKE SETUP section.

With single-phase motors type M (see motor choice guideline in paragraph ACCESSORIES) performances are 20% lower than the three-phase motor.

→ The brakemotor is strongly recommended

THIS DOCUMENT DISPLAYS MOST TYPICAL STANDARD FEATURES AND SETUPS: CONTACT OUR OFFICES FOR MORE. ACTUATOR SHALL NOT COME TO MECHANICAL STROKE-END, TO AVOID FAILURES.

BEFORE OPERATING ACTUATOR MAKE SURE YOU READ AND UNDERSTOOD BASIC OPERATIONAL INSTRUCTIONS SHOWN ON USERMANUALS, AVAILABLE FROM WEBSITE. CONSIDER MECVEL's LIMITSWITCHES (MODEL ALI4-F or ALI4-FCM) OR PUT THEM ON MACHINE/FRAME

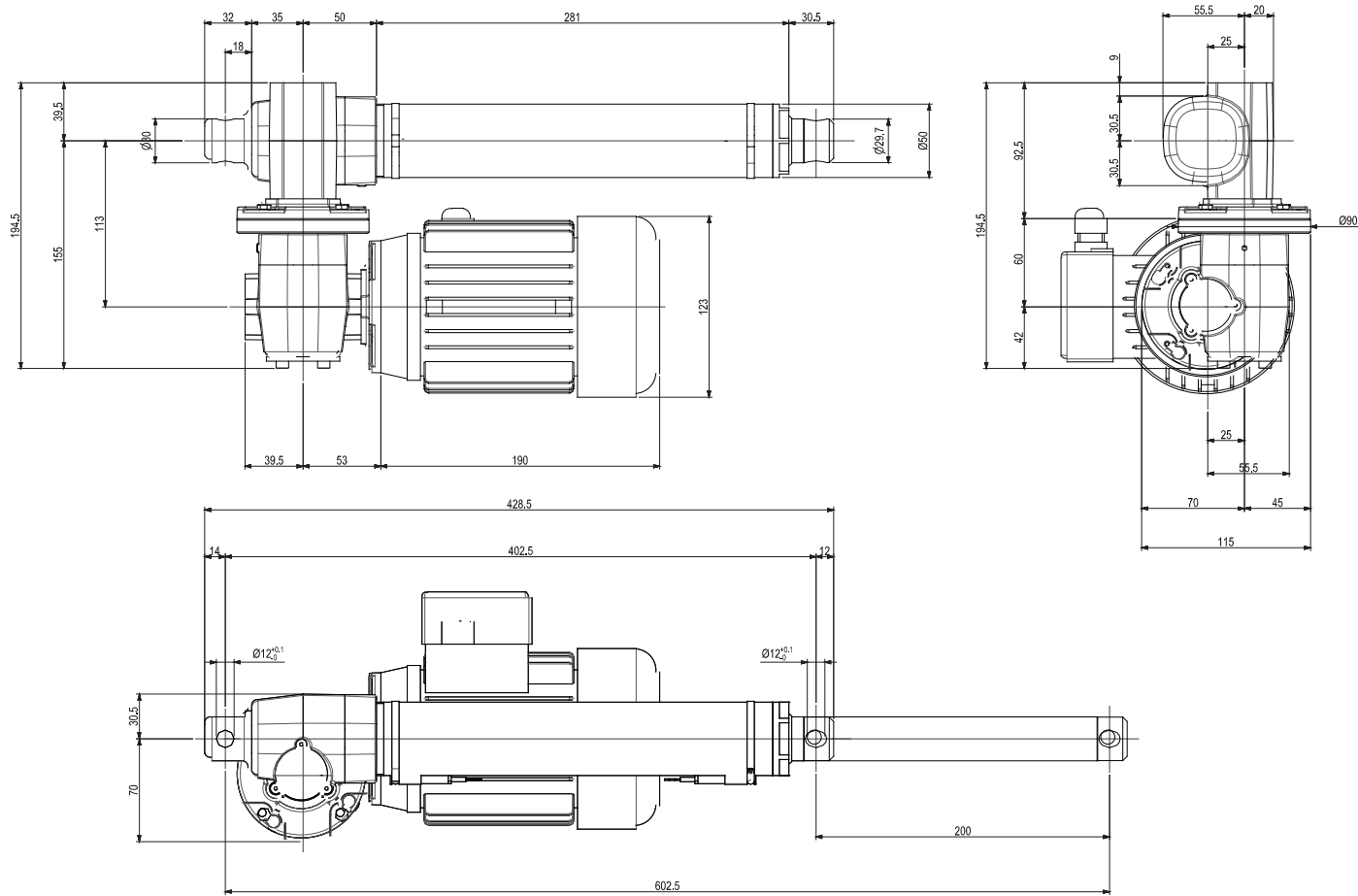


MecVel reserves the right to change products information and/or features without notice; all data contained in this catalogue are purely indicative and not binding for the company.

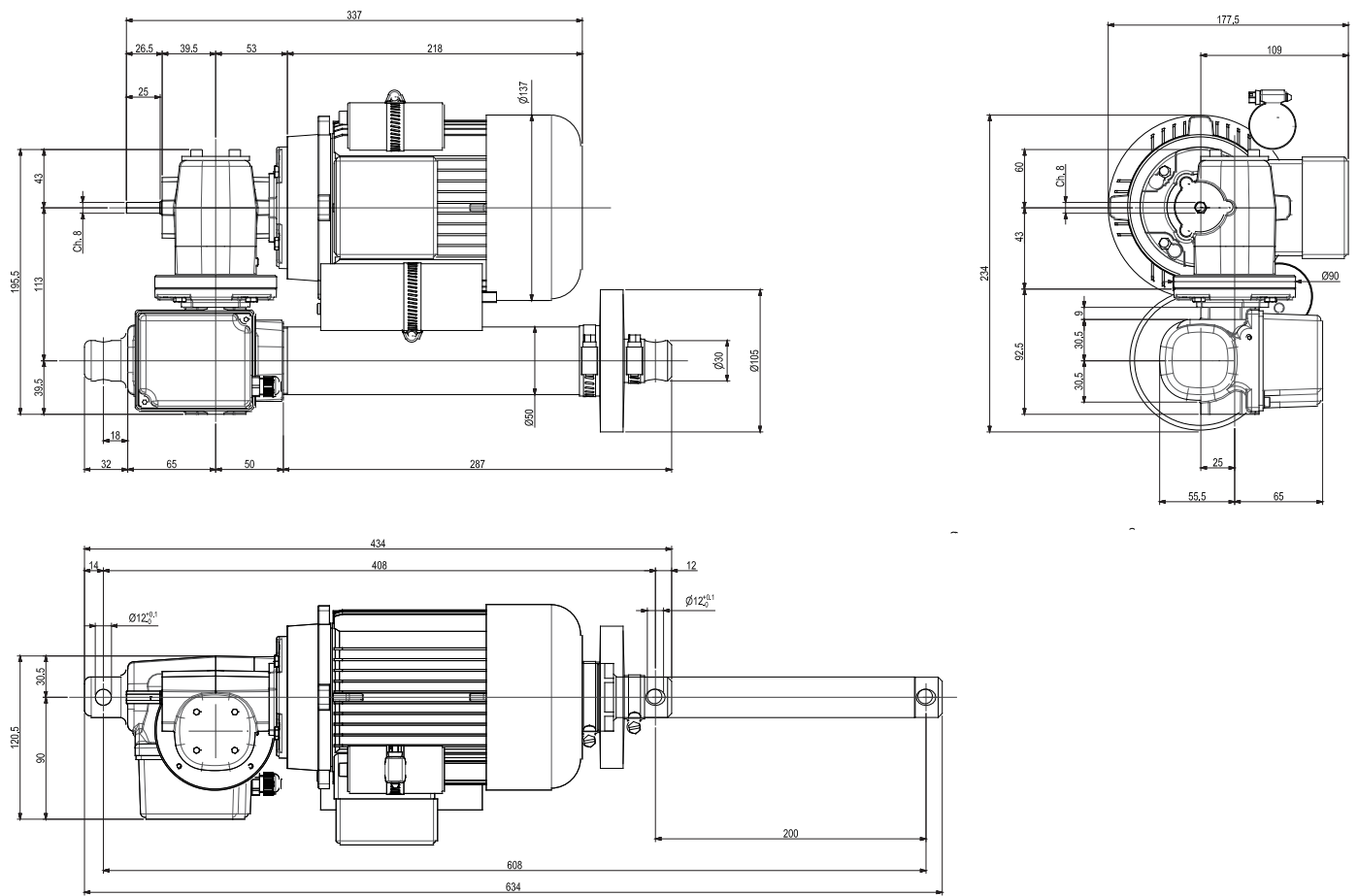
ALI 4-P



VERSION WITHOUT LIMITSWITCHES



VERSION WITH LIMITSWITCHES

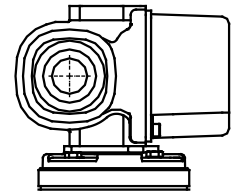
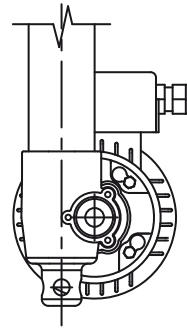
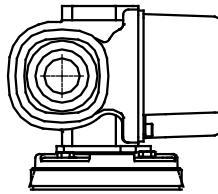
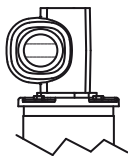
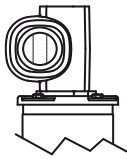


REAR END

MOTOR POSITION

E-BOX POSITION

LIMIT-SWITCH POSITION



P1 (standard)

P2 (rotated 90°)

M0

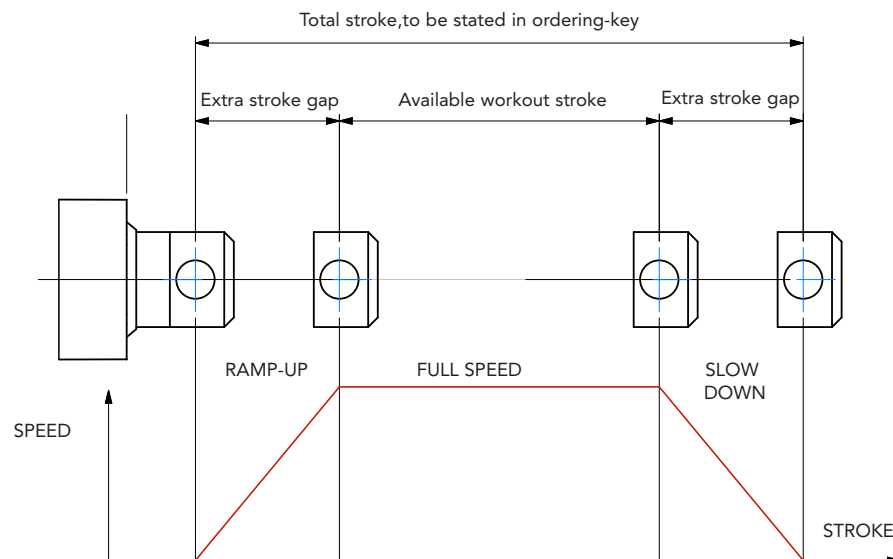
1 (standard)

M0 FC1 (standard)

STROKE SETUP

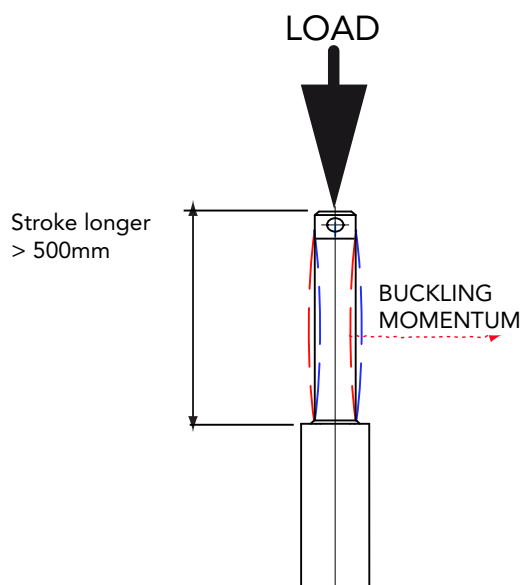
Useful tips for handling stroke and avoid run-on-block collision.

- When stroke is more than 350 mm, add 50 mm extra-stroke as guidance, and put corresponding value in ordering-key.
- **WARNING SPEED-TIMING ALONG STROKELENGTH:** ramps are extremely important when speed is >30 mm/s!!! Inverter or PWM drive recommended!
- The more speed raises the more extra stroke has to raise too.



BUCKLING

When stroke is longer than 500mm, BUCKLING can be a risk: please check mounting with our offices and/or see usermanuals.



IMPORTANT:

Long strokes, even if load is low, can generate significant buckling momentums, as sketch shows. This happens when actuator is in its all-opened position: that's the reason why we recommend 100 mm extra-stroke. Pushtube will have this 100 mm-portion always inside the overtube, improving guidance against buckling.

For more information on this, contact our office.



ALI4-P/0250/M01/CA-400/50-T-71-2-0,55/AB/M0/1/E06/2FC1/POT01A/FC1/P1/A1/

MODEL

ALI4-P / ALI4-P-F / ALI4-P-FCM / ALI4-P-FCI / ALI4-P-VRS / ALI4-P-VRS-F / ALI4-P-VRS-FCM / ALI4-P-VRS-FCI

STROKE

es. 250 mm = 0250

VERSION

M01 / M02 / M03 / M04 / M05 / M06 / M07
M00 Not standard speed
Flanged version: indicate reduction ratio and screw pitch

MOTOR

AC: version, voltage, type, size, n°pole, power
With motorflange only put 0
With special motorflange put: PD

AC MOTOR OPTIONS

Motorflange: for motorflange version only advise size - i.e.for IEC56 B14 put 56B14
Protection Degree: IP65, for selfbrake motor IP54 standard
Brake type: for brakemotors only (es. FECA)
Options: Advise if needed (es. AB 2'shaft)

MOTOR POSITION

M0 None: Leave blank

LIMIT SWITCHES

2FC1 None: Leave blank

LIMIT SWITCHES POSITION

FC1 None: Leave blank

E-BOX POSITION

1 No Motor: Leave blank

ENCODER

Options pg.76 None: Leave blank

POTENTIOMETER

POT01A (1Kohm) POT10A (10Kohm) None: Leave blank

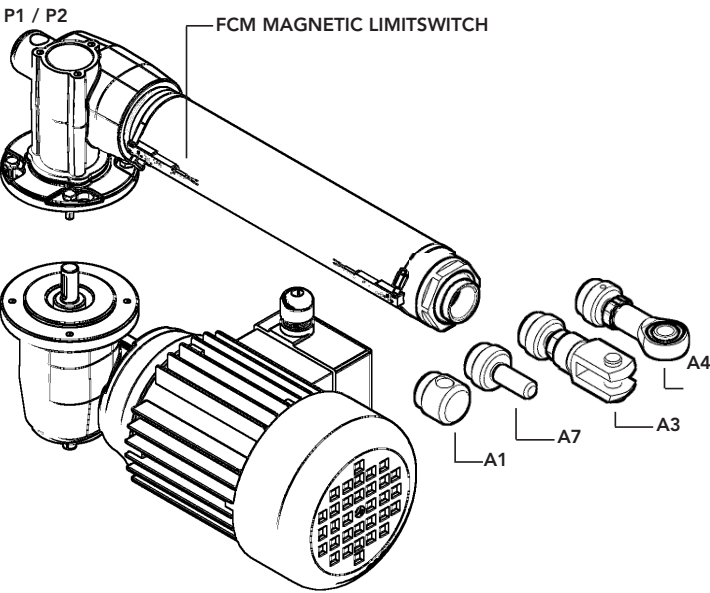
REAR END

P1 = Eyelet (standard) P2 = Eyelet (90°)

FRONT END

A1 = Eyelet (standard) A3 = Yoke + Clip A4 = Rod end A7 = M12 male

NOTE: COMPLETE THE ORDERING KEY ADDING THE OPTIONS YOU CAN FIND IN THE "ACCESSORIES AND OPTIONS" SECTION



Note: "B" dimension changes according to model

ALI4-P = See figure
ALI4-P-F = +30 mm
ALI4-P-FCM = +42,5 mm
ALI4-P-FCI = +42,5 mm
ALI4-P VRS = +25 mm
ALI4-P-F VRS = +55 mm
ALI4-P-FCM VRS = +53 mm
ALI4-P-FCI VRS = +53 mm
ALI4-P with antirotation device L = +15 mm
ALI4-P with safety nut G = +30 mm
ALI4-P with bellows boot B = +15 mm (not compatible with FCM e FCI versions)

