

- Permanent magnet motor 12-24 Vdc
- Double worm gearbox
- Acme lead screw or ballscrew (VRS)
- Chrome plated steel push rod
- Permanent grease lubrication
- IP 65, tested according to rule CEI EN 60529
- Working temperature range -10°C +60°C
- Limit switches, potentiometer and encoder on request

| ALI2-P (Vcc) | | | | | | |
|--------------|-----------------|---------|------------|----------------------|--------------------------------------|---------------------|
| Fmax (N) | Speed (mm/s) | Version | Motor size | Motor speed (rpm) | Max Current for F max(A) 24Vdc ** | Fs % base 5 min. |
| 2400 | 30 | M01 | 59 | 4000 | 9,5 | 10 |
| 3000 | 15 | M03 | 59 | 4000 | 7 | 30 |
| 4200 | 10 | M04 | 59 | 4000 | 9,5 | 10 |
| 4200 | 7 | M05 | 59 | 4000 | 7 | 30 |
| 4200 | 2.5 | M07 | 59 | 4000 | 3 | 30 |
| 4200 | 0.6 | M09 | 59 | 4000 | 1 | 30 |

When strokes are longer than 350mm, **BRAKEMOTOR IS RECOMMENDED**

** For 12 Vdc power supply currents are doubled and loads are 20% lower.

BEFORE OPERATING ACTUATOR MAKE SURE YOU READ AND UNDERSTOOD BASIC OPERATIONAL INSTRUCTIONS SHOWN ON USERMANUALS, AVAILABLE FROM WEBSITE.

THIS DOCUMENT DISPLAYS MOST TYPICAL STANDARD FEATURES AND SETUPS: CONTACT OUR OFFICES FOR MORE.

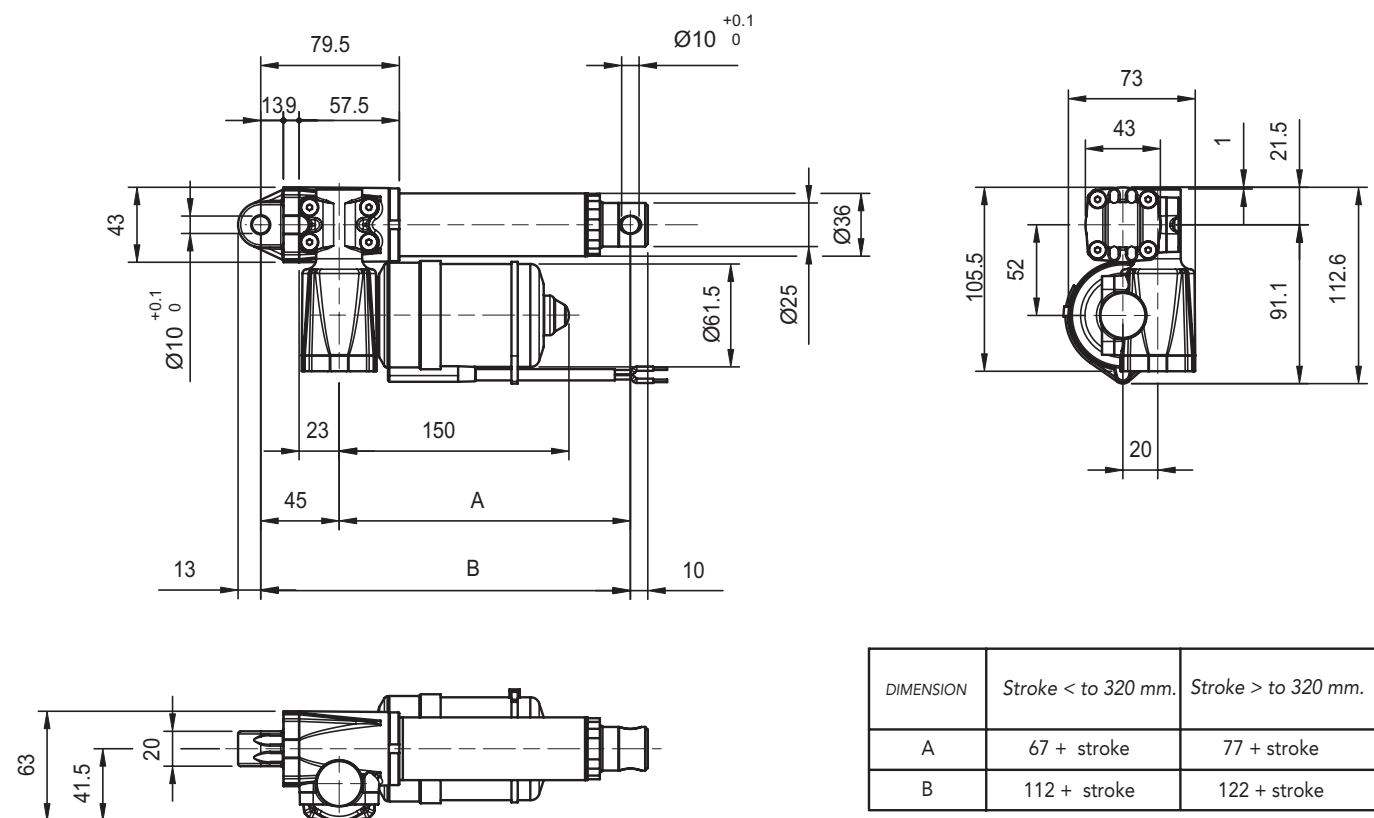
ACTUATOR SHALL NOT COME TO MECHANICAL STROKE-END, TO AVOID FAILURES.
CONSIDER MECVEL's LIMITSWITCHES (MODEL ALI2-F or ALI2-FCM) OR PUT THEM ON MACHINE/FRAME.



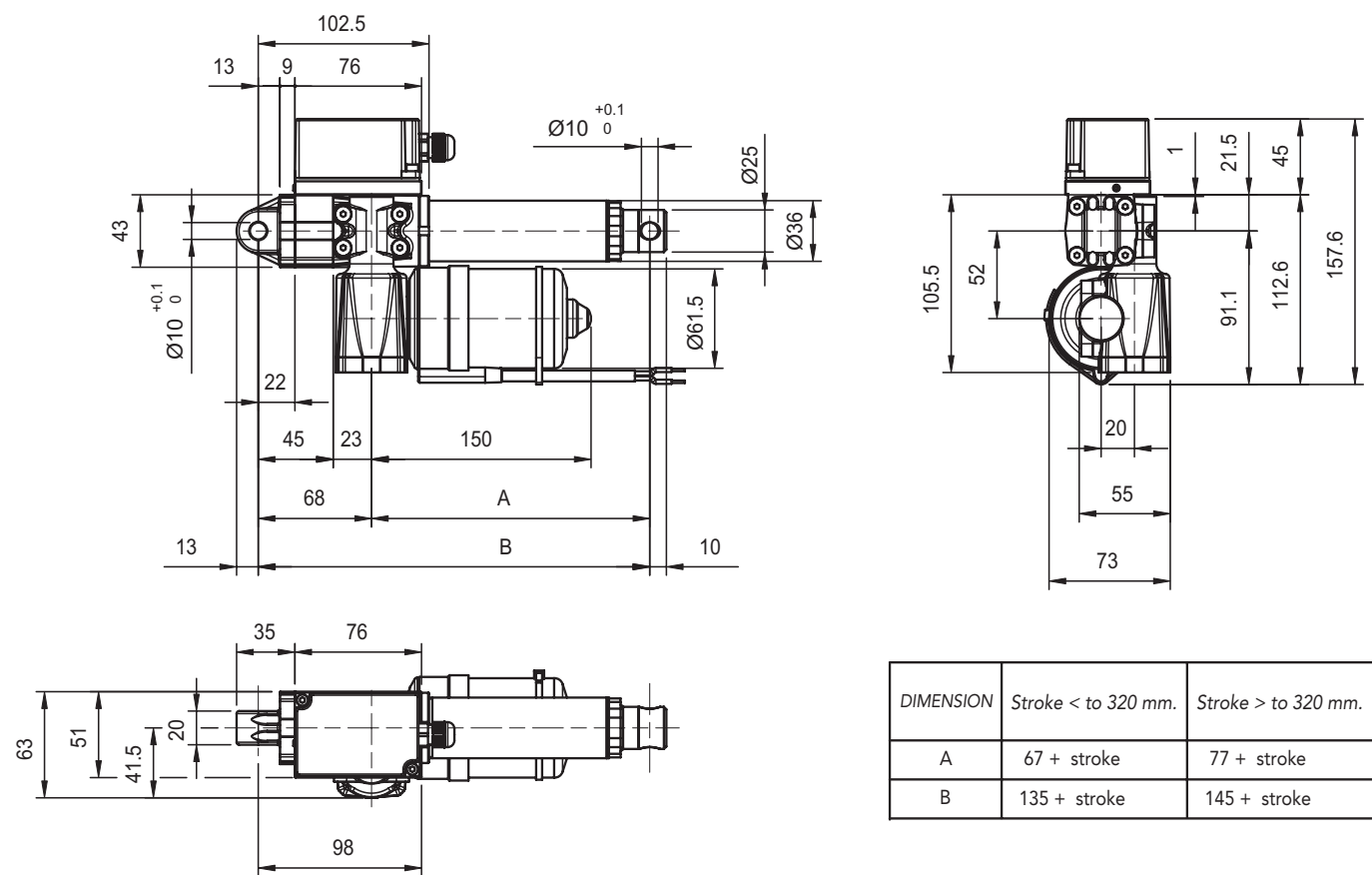
MecVel reserves the right to change products information and/or features without notice; all data contained in this catalogue are purely indicative and not binding for the company.

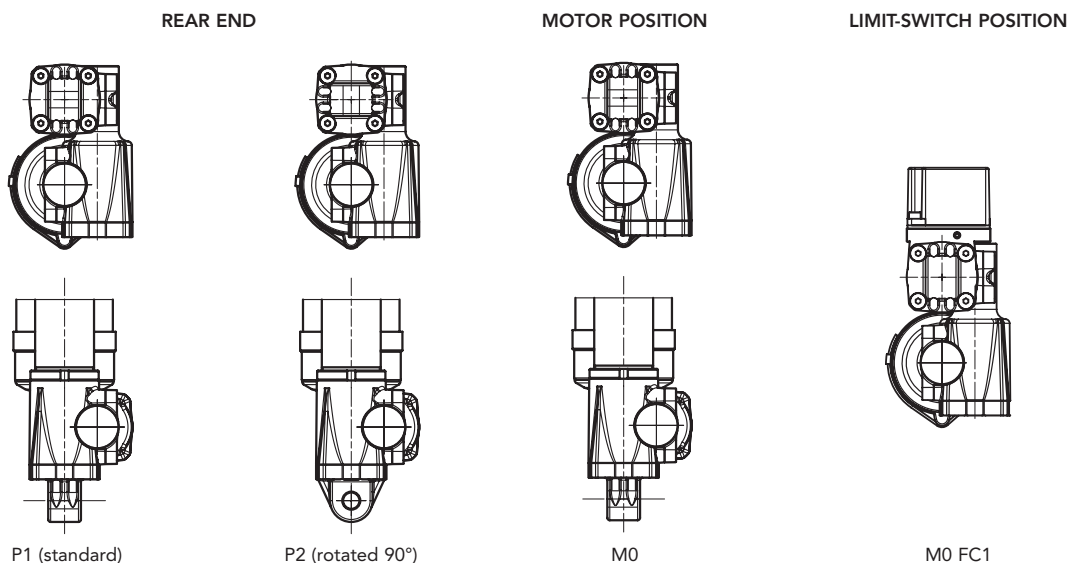


VERSION WITHOUT LIMITSWITCHES



VERSION WITH LIMITSWITCHES

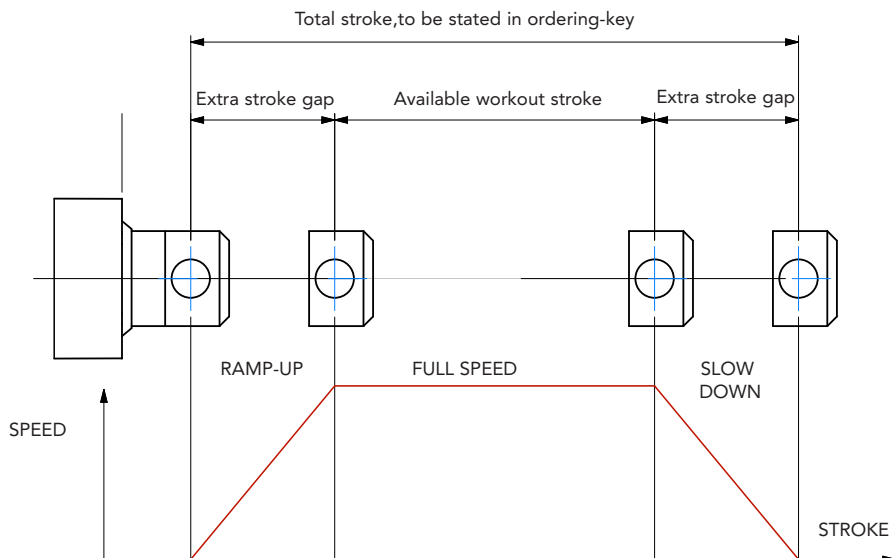




STROKE SETUP

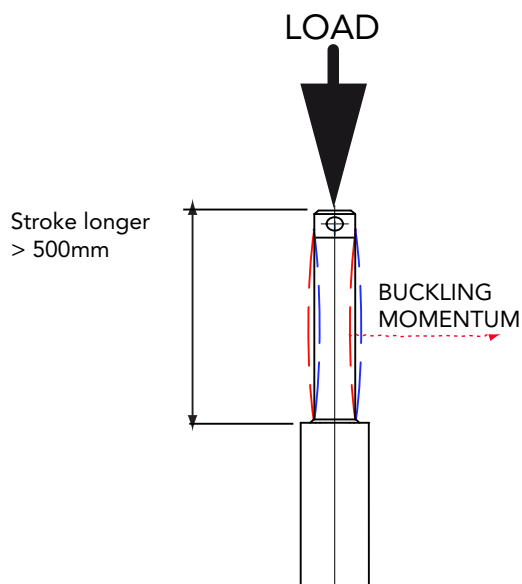
Useful tips for handling stroke and avoid run-on-block collision.

- When stroke is more than 350 mm, add 50 mm extra-stroke as guidance, and put corresponding value in ordering-key.
- **WARNING SPEED-TIMING ALONG STROKELENGTH:** ramps are extremely important when speed is >30 mm/s!!! Inverter or PWM drive recommended!
- The more speed raises the more extra stroke has to raise too.



BUCKLING

When stroke is longer than 500mm, BUCKLING can be a risk: please check mounting with our offices and/or see usermanuals.



IMPORTANT:

Long strokes, even if load is low, can generate significant buckling momentums, as sketch shows. This happens when actuator is in its all-opened position: that's the reason why we recommend 100 mm extra-stroke. Pushtube will have this 100 mm-portion always inside the overtube, improving guidance against buckling.

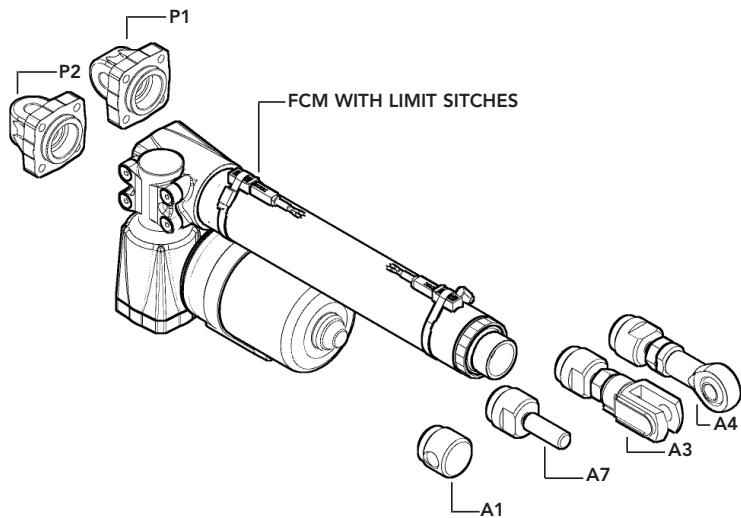
For more information on this, contact our office.



ORDERING KEY

| | | | | | | | | | |
|-------------------------|--|---|--|--------------------------|--|---------------------|--|--|--|
| MODEL | | ALI2-P | | ALI2-P-F | | ALI2-P-FCM | | ALI2-P/0250/M01/24/M0/E01/2FC1/POT01A/FC1/P1/A1/ | |
| STROKE (mm) | | es. 250 mm = 0250 | | | | | | | |
| VERSION | | M01 / M03 / M04 / M05 / M07 / M08 / M09 | | M00 = Not standard speed | | | | | |
| MOTOR | | 12 = 12 Vdc | | 24 = 24 Vdc | | | | | |
| MOTOR POSITION | | M0 | | | | | | | |
| LIMIT SWITCHES | | 2FC1 | | None: Leave blank | | | | | |
| POTENTIOMETER | | POT01A (1Kohm) | | POT10A (10Kohm) | | None: / Leave blank | | | |
| ENCODER | | Options pg.76 | | None: Leave blank | | | | | |
| LIMIT SWITCHES POSITION | | FC1 | | None: Leave blank | | | | | |
| REAR END | | P1 = Eyelet (standard) | | P2 = Eyelet (90°) | | | | | |
| FRONT END | | A1 = Eyelet | | A4 = Rod end | | A3 = Yoke + Clip | | A7 = M10 male | |

NOTE: COMPLETE THE ORDERING KEY ADDING THE OPTIONS YOU CAN FIND IN THE "ACCESSORIES AND OPTIONS" SECTION



Note: "B" dimension changes according to model

ALI2-P= See pictures
ALI2-P stroke > 320 mm = + 10 mm
ALI2-PF = + 23 mm
ALI2-PF stroke > 320 mm = +33
ALI2-P-FCM = + 33 mm
ALI2-P-FCM stroke > 320 mm = +43 mm
With safety nut "G" = + 30 mm
Bellows = + 20mm

